

A Complete Door System

THERMA TRU
DOORS



Uncompromising quality, inside and out.



THERMA-TRU
DOORS

Engineered to work together.

A Therma-Tru. door system with genuine Therma-Tru components is engineered with craftsman precision to help provide weather resistance and energy efficiency. So when a homeowner chooses a complete Therma-Tru door system, you can be confident it will perform as exceptionally as it looks.

Therma-Tru specifies all of the components to work together at the most critical points where an ordinary door system's performance can fail, letting in air and moisture.






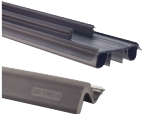
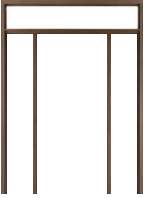


Backed by our lifetime limited warranty.



We can stand behind more parts and for longer than other door companies because we make or specify everything that goes into our door systems. The homeowner has one source, Therma-Tru, to turn to if an issue arises with the door system.¹ Other companies either don't warrant as many parts of the door system or warrant them for a shorter period of time. That could leave the homeowner without coverage and confused about who to turn to if issues arise.

Warranty Coverage

							
	Door Panel	Glass & Lite Frame	Multi-Point Locking Mechanism ²	Sill & Hinges ²	Corner Seal Pads ³	Bottom Sweep ³ & Weatherstrip ³	Composite Door Frame
Therma-Tru. Fiberglass Doors Lifetime Limited Warranty	LIFETIME	LIFETIME	LIFETIME	LIFETIME	LIFETIME	LIFETIME	LIFETIME + 10 Year Transferable Warranty Rider
Other Fiberglass & Wood Door Companies' Warranties	1 Year– Lifetime	0–20 Years	0 Years	0 Years	0 Years	0 Years	0 Years–Lifetime

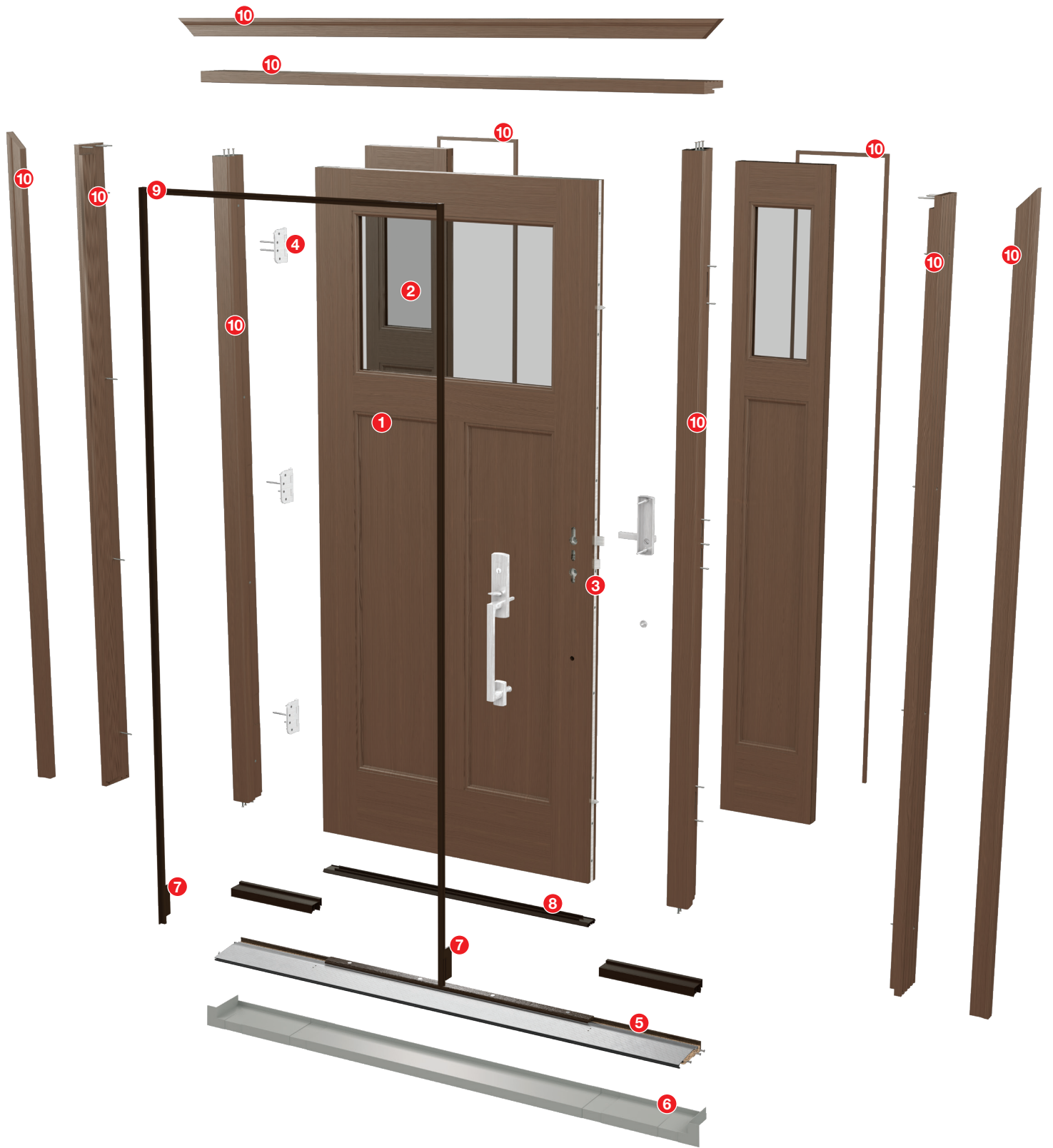
Note: See your Therma-Tru seller or visit www.thermatru.com for details on ENERGY STAR qualified products and for details on limited warranties and exclusions.

*See your Therma-Tru seller for details on product availability.

¹Excluding improper assembly of components into a door system by the distributor, dealer, builder or remodeler, and the installation of the door system.

²Excluding installations within 5 miles of a body of salt water and the finish.

³Excluding normal wear and tear.



A Complete Door System



- 1 Fiberglass Door Panel**
Delivers years of low-maintenance durability. Unlike wood, fiberglass will not warp or rot. Unlike steel, it will not dent or rust.



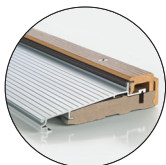
- 2 Glass**
Welcomes natural light into the home and is available in a variety of styles, many featuring triple-pane construction.



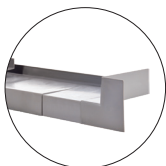
- 3 Multi-Point Locking System**
(Recommended)
Engages the door and frame at three points from top to bottom for enhanced stability.
More on pages 18-19.



- 4 Hinges**
Ensure smooth operation and position the door so it creates a tight seal with the weatherstrip when closed.
More on page 15.



- 5 Sills**
Provides a solid stepping surface and forms a tight seal at the bottom of the door system to help channel moisture away from the home.
More on pages 10-13.



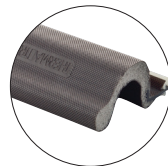
- 6 Sill Pan**
Adds an extra layer of protection to help keep moisture away from the subfloor.
More on page 11.



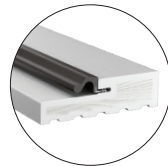
- 7 Corner Seal Pads** (Inswing Only)
Fit securely behind the weatherstrip to help block wind-driven moisture infiltration at the bottom corner of the door system.
More on page 16.



- 8 Bottom Sweeps** (Inswing Only)
A dual-bulb, dual-fin design helps maintain tight contact with adjustable sill caps and creates added barriers against moisture.
More on pages 11-12.



- 9 Weatherstrip**
Features a resilient design to help deliver a precise seal between the door and frame.
More on page 17.



- 10 Composite Door Frame***
Provides a rot-free solution that delivers extra protection from the damaging effects of moisture.
More on pages 8-9.



- Astragals**
Cover the margin between double doors to help complete the seal against air and moisture infiltration, with aluminum construction for stability, holding power and durability.
More on page 21.

Need help determining which parts you need for your Therma-Tru door system?
See pages 22-23 for more information.



Contributing to an energy-efficient home.




More than 80% of Therma-Tru. door and glass options are ENERGY STAR. qualified, contributing to an energy-efficient home. By helping to keep heating and air conditioning sealed in the house, a complete door system can provide a boost to home energy efficiency.

Note: See your Therma-Tru seller or visit www.thermatru.com for details on ENERGY STAR qualified products.

*The Rider does not warrant workmanship of anyone who assembles or installs a Tru-Defense door system, nor any damages caused by improper handling, assembly or installation.

Tru-Defense® Door Systems

Therma-Tru fiberglass doors are available with the exclusive Tru-Defense door system as an option. It integrates specific components engineered and tested to deliver outstanding protection in all kinds of weather conditions.

It's backed by a Warranty Rider for homeowner peace of mind that provides for cash reimbursement up to \$2,000 that may be used toward secondary damage to flooring and trim, and the labor to make repairs, if water infiltration occurs.* Look for the  icon.

Water Infiltration Cash Reimbursement Limit

Latch and Deadbolt Lock with Standard Assembly: with a Therma-Tru Sill Pan:	\$250 \$500
Multi-Point Lock with Standard Assembly: with a Therma-Tru Sill Pan:	\$750 \$1,500
Multi-Point Lock with NAFS-Certified Door System: with a Therma-Tru Sill Pan:	\$1,000 \$2,000



Quality tested to meet tough expectations.

Genuine Therma-Tru[®] components are put through multiple rigorous tests to help ensure that they will live up to a homeowner's toughest quality and performance expectations. We even have our own engineering lab as part of our ongoing commitment to ensuring that our products live up to our high standards for durability and reliability.

Tested for endurance.



The slam test is performed to commercial standards (AAMA 920), which are stricter than residential requirements, to help ensure long-lasting durability and reliability.

Confidence on the coast.



The salt fog immersion test (ASTM B117) simulates a highly corrosive atmosphere to help ensure that components with metal finishes resist corrosion.

Ready for winter weather.



Exposing our glass to weather-like conditions helps verify that moisture and condensation will not get trapped inside.

Resists deterioration and color fading.



Our QUV test helps ensure that weather sealing components and components with a colored finish resist deterioration and color fading with exposure to direct sunlight.

Tough when you need it.



Our barrel roll test simulates moving household appliances in and out of the house on a dolly. This test helps ensure the long-lasting durability and reliability of our sills.

Strength in a hurricane.



Our Impact-rated doors pass a large missile impact test. We blast a 9 lb. 2" x 4" stud into the doors at 34 mph to prove they're the better choice for strength and stability.

Superior sound dampening.

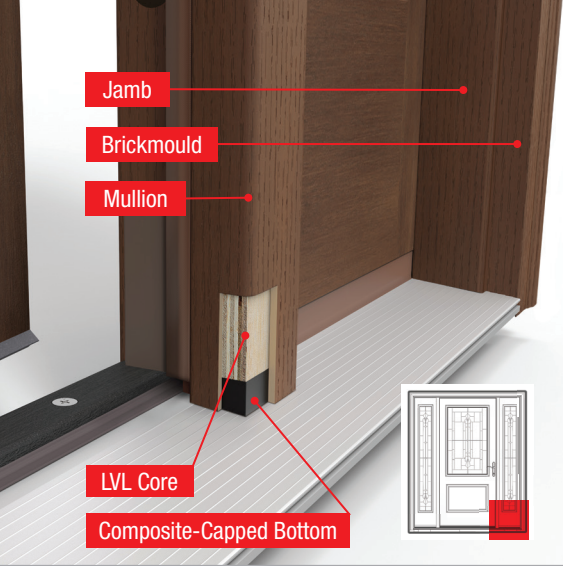


Therma-Tru Sound Transmission Class- (STC) rated Noise Reduction doors deliver aesthetics with a commercial level of performance for residential projects.

High power testing.



Design Pressure (DP) ratings are based on a Therma-Tru door system's performance in Structural Wind Load. As an example: A DP-50 structural performance rating indicates that the door system has passed a structural test pressure of 75 lbs. per sq. ft. which is equal to a 165 mph wind.



Composite Door Frame

featuring Tru-Guard™ Composite Technology

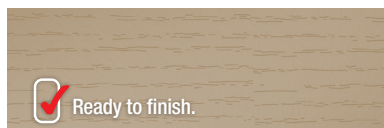
NEW Therma-Tru® composite door frame featuring Tru-Guard™ composite technology provides a rot-free solution engineered to work together with rot-resistant Therma-Tru doors and components.



- Delivers extra protection from the damaging effects of outside elements for peace of mind.
- Eliminates the risk of rot and wood-ingesting insects with a durable composite material that is virtually maintenance free. Rot-free door frame does not absorb moisture and resists mold, mildew and fungus.



Available Textures



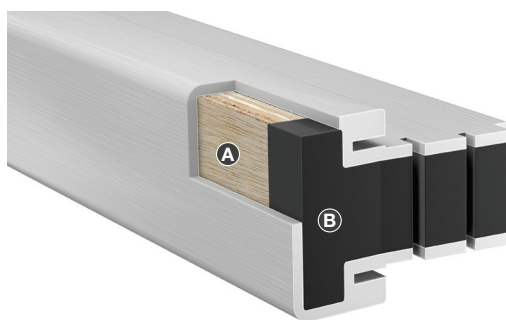
Buff Grained

- Features a universal wood grain to complement a wide range of grain species.
- Stain or paint to complement the entry – no sanding or priming required.



White Smooth

- Features a matte finish similar to painted wood and includes a protective layer with UV inhibitors to help resist yellowing and fading.
- Ready to install as-is – no painting required. Or finish with stain or paint to complement the entry – no sanding or priming required.



Reinforced Mullions

Provide additional structural support and stability. All mullions are reinforced with a co-extruded **A** LVL core to provide additional structural support and stability and feature a **B** composite-capped bottom to eliminate the risk of water absorption and maintain a rot-free composite exterior.



Pre-Inserted Weatherstrip Option

Select white smooth composite jambs and mullions, pre-machined for hinges and locks, are available with a convenient pre-inserted weatherstrip option for a quicker install. Look for the (🔒) icon.



Included in the Therma-Tru fiberglass door system lifetime limited warranty.

10-Year Transferable Full-System Rider

Available for Therma-Tru door systems with full-system Therma-Tru components.



Frame-only lifetime limited warranty option also available.

Composite Door Frame Parts

See your Therma-Tru seller for a full list of available product sizes and options.

Jamb



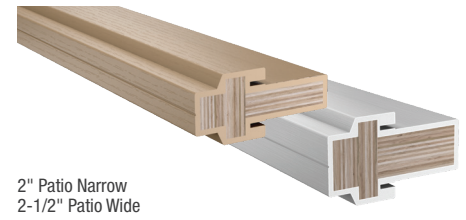
4-1/8"
4-9/16" 
5-1/4"
6-9/16" 
7-1/4"

Mullions


All mullions feature a reinforced co-extruded LVL core with a composite-capped bottom.



2" Entry Narrow 
2-1/2" Entry Wide 



2" Patio Narrow
2-1/2" Patio Wide

 Pre-inserted weatherstrip option available for select white smooth jambs and mullions pre-machined for hinges and locks.

Trim



2" Brickmould WM180

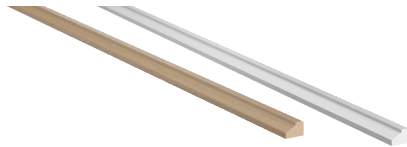


1-5/8" Florida Brickmould WM176



3-1/2" x 3/4" Flat Casing

Trim



7/16" x 5/16" Cove Mould

Transom Sills



4-9/16"
6-9/16"

Storm Door Adaptor



6-9/16" Base Adaptor

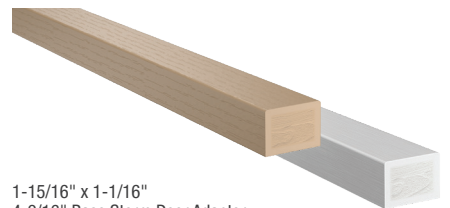
Mull Casing



1-7/32" x 7/32"



2-15/16" x 1-1/16" *Buff grained only.*
2-15/16" x 3/8" *Buff grained only.*



1-15/16" x 1-1/16"
4-9/16" Base Storm Door Adaptor
Face Storm Door Adaptor

Screen Track Cap



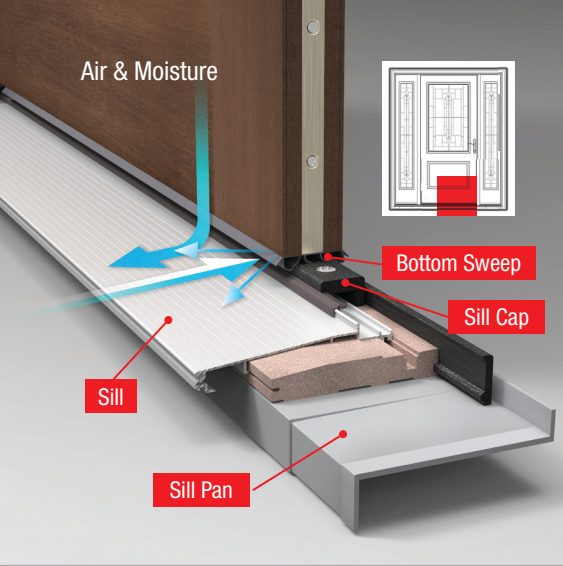
1-13/32" x 9/16"

Fasteners, Setting Tool & Screw Plug Covers



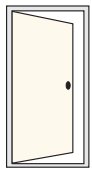
Jamb screw plugs hide unsightly screws, allowing jamb to be installed with screws through its thickest part for better aesthetics and long-term performance.

Screw plugs are available on a collated strip for ease of installation and finishing.



Sills, Bottom Sweeps, Sill Pan & Sill Covers

Genuine Therma-Tru® sills and bottom sweeps help form a tight seal against wind-driven moisture infiltration at the bottom of the door system and help channel moisture away from the home. The sill pan (recommended) adds an extra layer of protection to help keep moisture away from the subfloor.



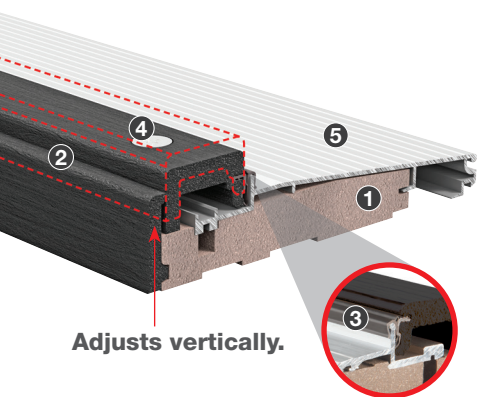
Inswing Sills

- Designed to mate with our inswing bottom sweeps to help seal the margin between the door and sill.
- Help channel moisture away from the home with a 6-degree sloped ramp.
- Help provide a solid stepping surface with a slip-resistant tread pattern on the approach.
- A thermal break helps stop cold and heat from traveling through the sill and forming condensation inside the home.
- Offered in a variety of materials with features to meet the needs of different climates and exposures.

See finish options on page 14.

Adjustable for long-lasting performance.

Genuine Therma-Tru sills are engineered with features to help minimize the potential for leaks and drafts. Our adjustable sills allow the sill cap to adjust vertically to close gaps over time, helping to maintain a tight seal between the sill and bottom of the door.

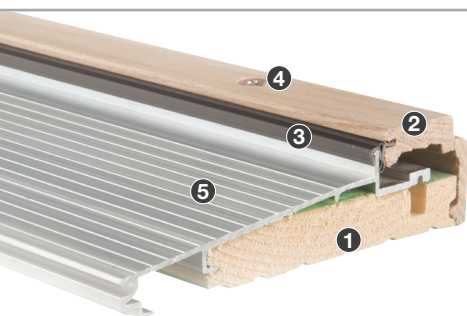


Adjusts vertically.

Composite Adjustable Sill

- 1 Extra thick, continuous all-composite substrate.
- 2 Thick, through-colored composite cap and nosing, featuring a wood-grained appearance.
- 3 High-dam, narrow cap mates with the dual-bulb bottom sweep to deflect moisture away from the cap; engineered U-shaped weather seal creates an added barrier against wind-driven moisture.
- 4 Flush-fitting, premium stainless steel screws form an uninterrupted sealing surface, resist corrosion, and adjust the cap to help maintain a tight seal.
- 5 Thick, 15-gauge aluminum approach provides excellent durability.

Note: Continuous length available with spread mullion capability to fill 49"-75" rough openings. See the Therma-Tru 2018 Architectural Details & Components manual for actual unit size specifications.

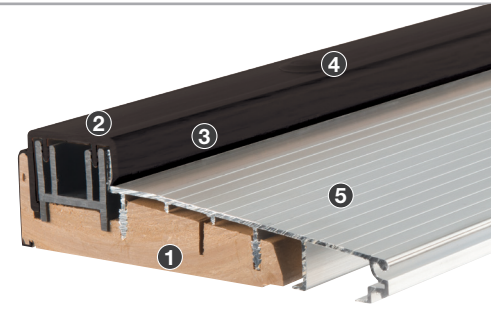


Hardwood Adjustable Sill

- 1 Continuous moisture-resistant treated Pine substrate provides a solid stepping surface and resists rot.
- 2 Durable hardwood cap and nosing stands up to wear and can be stained to match the door and trim.
- 3 High-dam, narrow cap mates with the dual-bulb bottom sweep to help deflect moisture away from the cap; engineered U-shaped weather seal creates an added barrier against wind-driven moisture infiltration.
- 4 Flush-fitting zinc dichromate screws form an uninterrupted sealing surface, resist corrosion, and adjust the cap vertically to help maintain a tight seal over time.
- 5 Thick, 15-gauge aluminum approach provides excellent durability and a solid stepping surface.

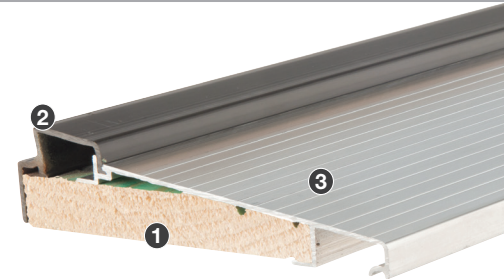
Basic Composite Adjustable Sill

- ❶ Continuous moisture- and insect-resistant all-composite substrate provides a solid stepping surface and superior rot-resistance.
- ❷ Moisture- and insect-resistant composite cap and nosing resists rot.
- ❸ High-dam cap mates with the dual-bulb bottom sweep to help deflect moisture away from the cap.
- ❹ Zinc dichromate screws with removable screw caps adjust to help maintain a tight seal over time.
- ❺ Thick, 15-gauge aluminum approach provides excellent durability and a solid stepping surface.



Basic Fixed Sill

- ❶ Continuous moisture-resistant treated Pine substrate provides a solid stepping surface and resists rot.
- ❷ Slanted cap and nosing mates with the single-bulb bottom sweep to help form a tight seal.
- ❸ 17-gauge aluminum approach provides a solid stepping surface.



Inswing Bottom Sweeps

- Designed to mate with our inswing sill caps to help seal the margin between the door and sill.
- Kerf-applied to fit securely into the bottom of the door to help protect against moisture penetration.
- Heavy-duty material resists deterioration, holding its shape to help maintain contact over time.



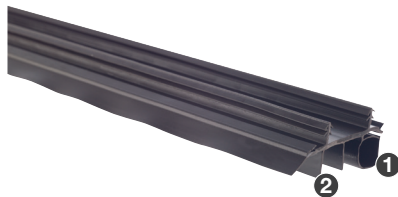
Kerf-Applied Dual-Bulb / Dual-Fin Bottom Sweep ❖

- ❶ Dual bulbs help maintain full contact with narrow sill caps.
- ❷ Dual fins create added barriers against moisture infiltration.
- ❸ Integrated rain deflector helps push moisture away from the cap.

Sills: Composite Adjustable | Hardwood Adjustable | Basic Composite Adjustable
Colors: Bronze | White



Note: Non-kerf-applied option available for replacement applications.

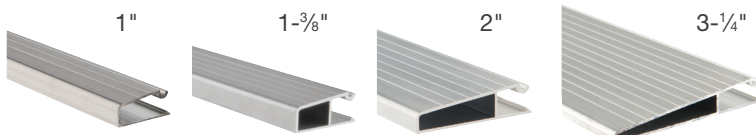


Kerf-Applied Single-Bulb Bottom Sweep

- ❶ Single bulb helps maintain tight contact with slanted sill caps.
- ❷ Multiple fins help block moisture infiltration and deflect moisture away from the cap.

Sill: Basic Fixed
Color: Bronze

Inswing Sill Extenders



Available for 3-1/4" and 5-3/4" sills only.

Available for 4-9/16" sills only.

Inactive Door Bottom ❖

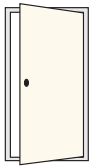


Sills:
 Composite Adjustable
 Hardwood Adjustable
Color:
 Bronze

Sill Pan (Recommended – Inswing Only) ❖



- Fits between the sill and subfloor for an added layer of protection against moisture.
- Engineered with sloped channels to help collect and drain moisture away.
- Moisture- and insect-resistant composite construction resists rot.
- Molded corners allow for a continuous seal, unlike wraps or site-made alternatives.



Outswing Sills

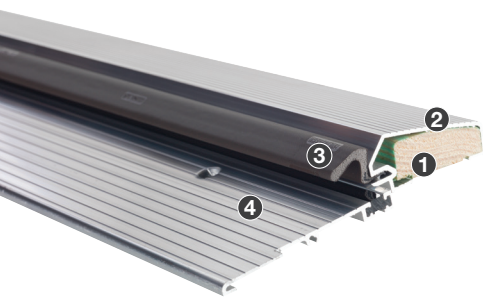
- Allow for a tight seal between the subfloor and door for superior performance against wind, air and water infiltration.
- Help provide a solid stepping surface with a slip-resistant tread pattern on the approach.
- Some options include a thermal break, helping stop cold and heat from traveling through the sill and forming condensation inside the home.
- Offered in a variety of materials with features to meet the needs of different climates and exposures.

See finish options on page 14.



Composite Outswing Sill +

- 1 Extra thick, continuous moisture- and insect-resistant all-composite substrate provides a solid stepping surface and superior rot resistance.
- 2 Thick, through-colored moisture- and insect-resistant composite cap and nosing resists wear and rot, featuring a realistic wood-grained appearance to complement home interiors.
- 3 Integrated removable weatherstrip creates a bumper effect, strengthening its seal with wind pressure.
- 4 Thick, 15-gauge aluminum approach provides excellent durability and a solid stepping surface.



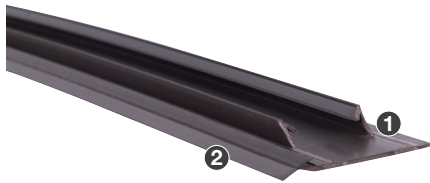
Aluminum Sill with Thermal Break

- 1 Continuous moisture-resistant treated Pine substrate provides a solid stepping surface and resists rot.
- 2 All-aluminum cap resists corrosion.
- 3 Integrated removable weatherstrip creates a bumper effect, strengthening its seal with wind pressure.
- 4 Extra thick, 14-gauge aluminum approach provides excellent durability and a solid stepping surface.

Note: Also available without thermal break for warmer climates.

Outswing Bottom Sweep

- Designed to provide added protection against wind-driven moisture infiltration at the bottom of the door.
- Kerf-applied to fit securely into the bottom of the door to help protect against moisture penetration.
- Heavy-duty material resists deterioration, holding its shape to help maintain contact over time.



- 1 Provides added protection at the bottom of the door.
- 2 Integrated rain deflector helps deflect moisture away from the cap.

Sills: Composite Outswing | Aluminum | Coastal
Color: Bronze

Outswing Sill Extender



2"

Finishes:
Lightwood (Premium)
Darkwood (Premium)

Inactive Door Bottom



Sill:
Composite Outswing
Color:
Bronze

Note: See your Thermo-Tru seller for available component options.

*To confirm code requirements in your jurisdiction, always check with your local building code authority.

Coastal Sill

(Without Thermal Break – For Coastal Regions)

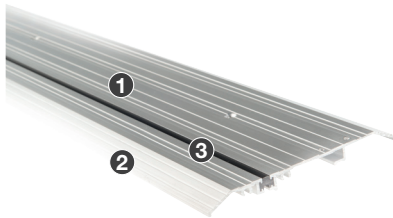
- ❶ Continuous treated Pine substrate provides a solid stepping surface and resists rot.
- ❷ All-aluminum cap resists corrosion and features an extra-high profile to provide improved resistance to wind-driven moisture infiltration.
- ❸ Integrated removable weatherstrip creates a bumper effect, strengthening its seal with wind pressure.
- ❹ Extra thick, 14-gauge aluminum approach provides excellent durability and a solid stepping surface.



Note: Helps meet code requirements in HVHZ (High Velocity Hurricane Zone) coastal regions.*

Public Access Sill with Thermal Break (For ADA Applications – Inswing / Outswing)

- Meets code requirements for Americans with Disabilities Act- (ADA) compliant applications.*
- Allows for a seal between the subfloor and door to help block wind-driven moisture infiltration.
- Designed to mate with our ADA bottom sweep to help seal the margin between the door and sill.



- ❶ All-aluminum construction resists corrosion.
- ❷ 1/2"-high uninterrupted surface features an ADA-compliant 1:2 ramp slope ratio.
- ❸ An epoxy thermal break helps stop cold and heat from traveling through the sill and forming condensation inside the home.

Note: Also available without thermal break for warmer climates. Door systems built with public access sills have little resistance to water penetration and have a potential to leak if installed exposed to weather. We recommend these systems be installed away from weather under large soffits or overhangs.

Bottom Sweep (ADA / Replacement)

- Designed to mate with our public access sill to help seal the margin between the door and sill.
- Heavy-duty material resists deterioration, holding its shape to help maintain contact over time.



- ❶ Maintains tight contact with the sill surface.
- ❷ Multiple fins help deflect moisture away from the cap and block moisture infiltration.

Sills: Public Access

Sill Covers (Recommended)

- Fits over the sill to help protect the sill cap and finish from damage during installation.
- Offered in a variety of options for a custom fit with most of our sills.
- Heavy-duty material withstands wear from moving heavy objects back and forth over the sill.

Note: Shown over composite adjustable sill.



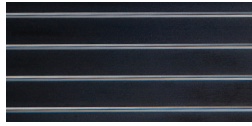
Finish Options

Therma-Tru offers an array of popular finish options to complement decorative glass coming, and interior and exterior home fixtures, to suit the home's style. Check with your Therma-Tru® seller for available finish and cap options.

Sill Finishes



Mill



Bronze

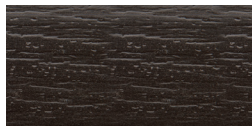


Satin Nickel

Cap Colors



Lightwood (Premium)
Composite Adjustable /
Composite Outswing



Darkwood (Premium)
Composite Adjustable /
Composite Outswing



Lightwood (Economy)
Basic Composite Adjustable



Darkwood (Economy)
Basic Composite Adjustable /
Basic Fixed



Hardwood
Hardwood Adjustable

	Inswing Options	Composite Adjustable	Hardwood Adjustable	Basic Composite Adjustable	Basic Fixed	Outswing Options	Composite Outswing	Aluminum with Thermal Break	Aluminum without Thermal Break	Coastal	Public Access (Inswing / Outswing)	Public Access (ADA)
Sill Finishes												
Mill	■	■	■	■	■		■	■	■	■	■	■
Bronze	■	■	■	■	■		■	■	■	■	●	■
Satin Nickel	■	●	●	●	●		■	●	●	●	●	●
Cap Colors												
Lightwood	■	●	■	●	●		■	●	●	●	●	●
Darkwood	■	●	■	■	■		■	●	●	●	●	●
Hardwood	●	■	●	●	●		●	●	●	●	●	●
Sill Configurations												
Single	■	■	■	■	■		■	■	■	■	■	■
French	■	■	●	■	■		■	■	■	■	■	■
Double Patio	■	■	●	●	●		■	●	●	●	●	●
Triple Patio	■	●	●	●	●		■	●	●	●	●	●
Lineal	■	■	●	●	●		●	●	●	●	●	●
Sidelite Configurations												
Boxed Sidelites	■	●	●	●	●		●	●	●	●	●	●
Single with Sidelites	■	■	●	●	●		■	●	●	●	●	●
French with Sidelites	■	●	●	●	●		●	●	●	●	●	●
Single Vented Sidelites	■	●	●	●	●		●	●	●	●	●	●
French Vented Sidelites	■	●	●	●	●		●	●	●	●	●	●
Depths												
4-9/16"	■	●	■	■	■		■	●	■	■	■	■
5-3/4"	■	■	■	■	■		■	■	●	●	●	●
6-9/16"	●	●	●	●	●		●	●	●	●	●	■
7-3/4"	■	■	■	■	■		●	■	●	●	●	●
Substrates												
Composite Extruded	■	●	●	●	●		■	●	●	●	●	●
Composite Injection Molded	■	●	■	●	●		●	●	●	●	●	●
Treated Pine	●	■	●	■	■		●	■	■	■	●	●
Other Options												
Integrated Thermal Break	■	■	■	■	■		■	■	●	●	■	■
Screen Rail Available	■	■	●	●	●		■	●	●	●	●	●
Sill Extenders Available	■	■	■	●	●		■	●	●	●	●	●
Sill Covers Available	■	■	■	■	■		■	●	●	●	●	●
Tru-Defense Eligible*	■	●	●	●	●		■	●	●	●	●	●
With Anchor Holes	●	●	●	●	●		●	■	■	●	●	■
Without Anchor Holes	■	■	■	■	■		■	■	●	■	■	●

Hinge Finish Options



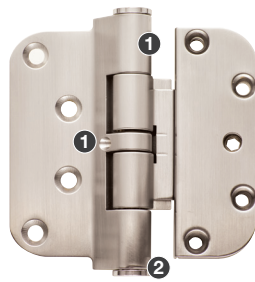
Bright Brass Brushed Nickel Black Nickel Polished Chrome Oil-Rubbed Bronze Stainless Steel Zinc Dichromate

Hinges

Adjustable Hinge

Finish Options:
Bright Brass
Brushed Nickel
Black Nickel
Polished Chrome
Oil Rubbed Bronze

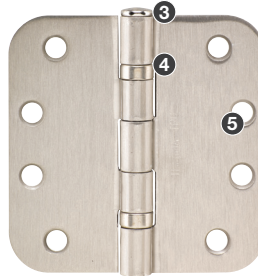
(Recommended for Classic-Craft premium entryways.)
Allow the door to be moved horizontally and vertically in the frame, maintaining alignment and keeping the door performing beautifully.



Classic-Craft® Ball-Bearing

Finish Options:
Bright Brass
Brushed Nickel
Black Nickel
Polished Chrome
Oil Rubbed Bronze
Stainless Steel
Zinc Dichomate

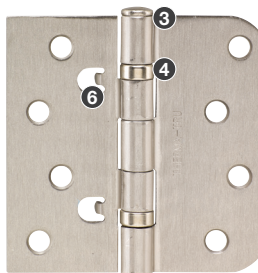
(Recommended for Classic-Craft premium entryways.)
Ball bearings help protect each hinge pivot for added support and stability.



Self-Aligning Ball-Bearing

Finish Options:
Bright Brass
Brushed Nickel
Black Nickel
Polished Chrome
Oil Rubbed Bronze
Stainless Steel
Zinc Dichomate

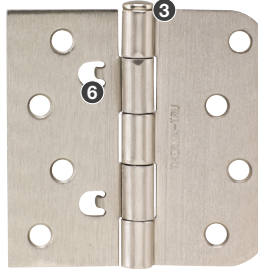
(Recommended for heavier Fiber-Classic, Smooth-Star and Steel doors.)
Contains locating tabs to assist in accurate alignment with specific door systems.



Self-Aligning

Finish Options:
Brushed Nickel
Black Nickel**
Polished Chrome**
Oil Rubbed Bronze
Stainless Steel**
Zinc Dichomate

(Recommended for heavier Fiber-Classic, Smooth-Star and Steel doors.)
Contains locating tabs to provide accurate alignment with specific door systems. Note: Non-removable pin option available with fixed pins, providing security on outswing applications.



Security Tab

Finish Options:
Brushed Nickel
Stainless Steel
Zinc Dichomate

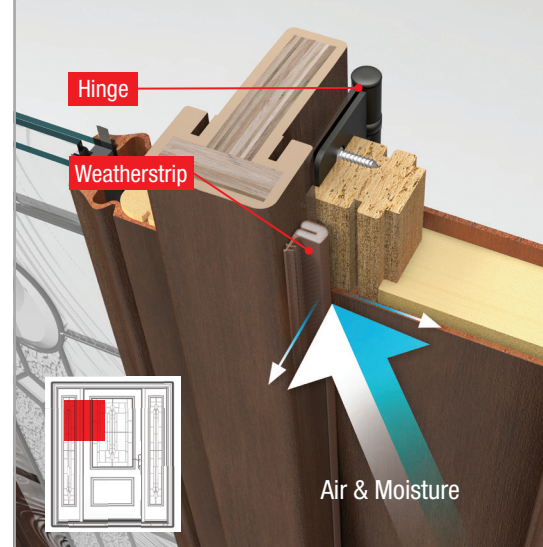
Security tabs prevent door from being taken off hinges, providing security on outswing applications.



Spring-Loaded

Finish Options:
Brushed Nickel
Black Nickel
Polished Chrome
Oil Rubbed Bronze
Stainless Steel
Zinc Dichomate

UL Listed with self-closing spring mechanism that helps pull the door closed for convenience or meets code requirements that may be applicable in Fire-door applications.***



Long-lasting, smooth performance.

Genuine Therma-Tru hinges are engineered with long-lasting durability and reliability in mind. They position the door to properly compress the weatherstrip to help form a tight, even seal when the door closes. Without precision engineering in this critical area, the weatherstrip can pinch if the door is too tight or gap if it is too loose, letting air and moisture pass between the door and frame.

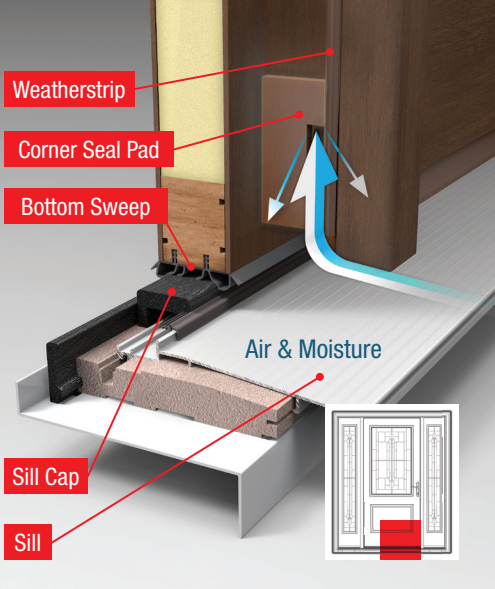
- Position the door for proper compression of the weatherstrip to form a tight seal when closed.
- Proper positioning also ensures smooth operation to help resist creaking and uneven wear.
- Offered in a variety of options designed to go with our door systems.

- 1 Hex screws adjust alignment of door in frame.
- 2 Fixed pins prevent door from being taken off hinges.
- 3 Removable pins allow door to be taken off hinges.
- 4 Ball bearings help protect each hinge pivot, for added support and stability.
- 5 C-shape hole pattern for premium wood door appearance.
- 6 Locating tabs for accurate alignment.
- 7 Security tab prevents door from being taken off hinges by driving out pins.
- 8 Self-closing spring mechanism that helps pull the door closed.

*For full details on the Tru-Defense Warranty Rider, visit www.thermatru.com/trudefense.

**Finishes only available for NRP Hinge.

***To confirm code requirements in your jurisdiction, always check with your local building code authority. Note: See your Therma-Tru seller for available component options.



Corner Seal Pads



Classic-Craft. 7-Shape Pads

Sills (Inswing Applications Only)

Composite Adjustable
Hardwood Adjustable
Basic Composite Adjustable
Public Access

Colors

Bronze
White



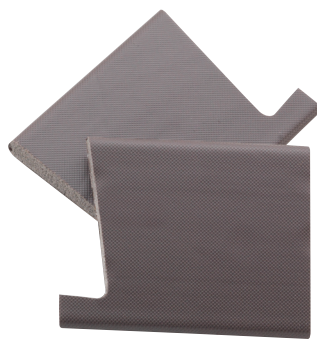
Fiber-Classic. / Smooth-Star. 7-Shape Pads

Sills (Inswing Applications Only)

Composite Adjustable
Hardwood Adjustable
Basic Composite Adjustable
Public Access

Colors

Bronze
White



Basic Fixed Pads

Sills (Inswing Applications Only)

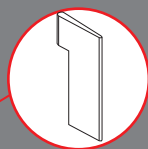
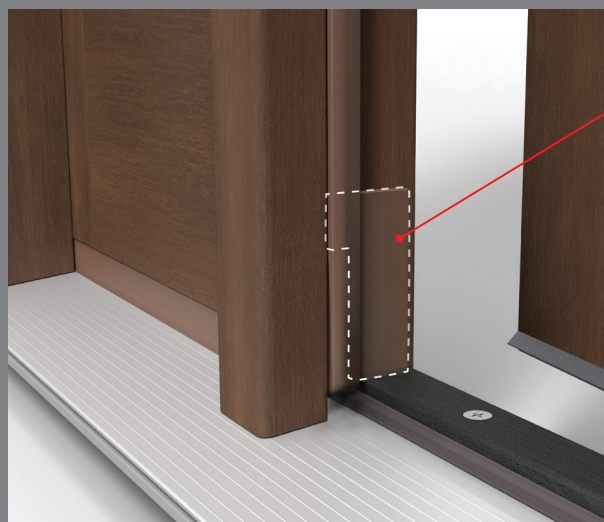
Basic Fixed

Colors

Bronze

Genuine Therma-Tru® **corner seal pads** (inswing only) complete the seal between the **sill cap**, **bottom sweep** and **weatherstrip** to help block potential pathways where wind-driven moisture can infiltrate the bottom corner of the door system. Without precision engineering in this critical area, wind pressure can push moisture-laden air through the corner and up the frame, leaking into the home and rotting the frame.

- Fit securely behind the weatherstrip to help block wind-driven moisture infiltration.
- Designed to mate with our inswing sills to complement weathersealing performance. (Not recommended for use on outswing applications.)
- Flexible, foam-filled material holds its shape over time, protected by a durable jacket to resist moisture and wear.



Creates an air pocket to inhibit water filtration.

Innovative weathersealing solutions.

Genuine Therma-Tru weathersealing components are carefully engineered to maximize the seal between the door and frame. The 7-shape corner seal pad completes our patented jamb assembly. This innovative design creates an air pocket that helps prevent a vacuum from forming and wicking moisture up the weatherstrip and into the home.

Weatherstrip & Rain Protection



Medium-Reach Weatherstrip

For square edge doors.

Colors
Bronze
White



Long-Reach Weatherstrip

For bull edge doors.

Colors
Bronze
White



Rain Deflector

(Inswing)

Pushes moisture away from the bottom of the door.

Colors
Bronze
White



Bottom of door; exterior view.

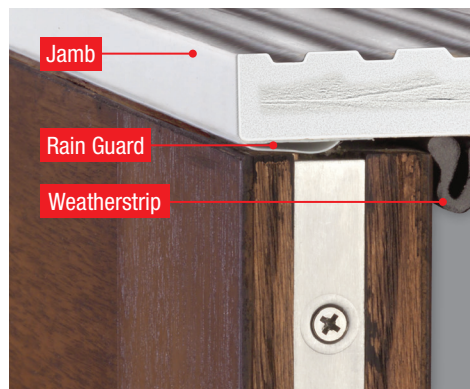


Rain Guard

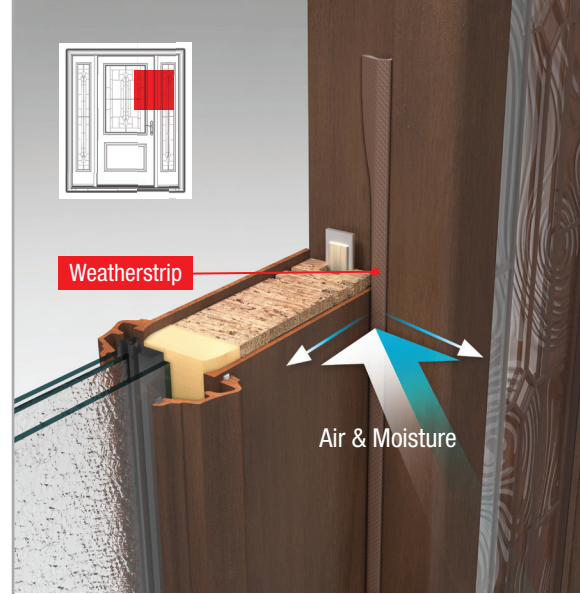
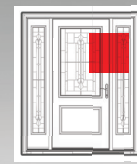
(Outswing)

Creates a barrier to moisture at the top of the door.

Colors
Bronze
White



Top of door; exterior view.



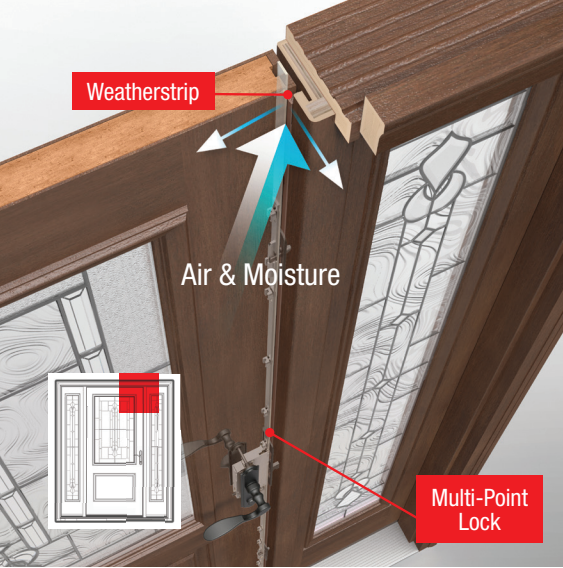
Genuine Therma-Tru® **weatherstrip** is specifically engineered in a variety of profiles to provide the best possible fit with our door systems, helping to deliver a precise seal between the door and frame. Without precision engineering in this critical area, misfitting weatherstrip can create gaps that allow air and moisture to pass through between the door and jamb.

Removable Weatherstrip

- Engineered in a variety of profiles to mate with our door families for a precise seal between the door and frame.
- Kerf-applied to fit securely into the top and sides of the jamb; removable for finishing.
- Resilient design compresses when closed and springs back when open for long-lasting sealing power.
- Flexible, foam-filled material holds its shape over time, protected by a durable jacket to resist moisture and wear.

Rain Protection (Recommended)

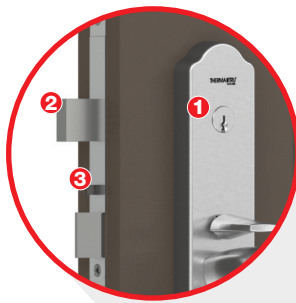
- Helps repel moisture away from areas exposed to wind-driven moisture infiltration, enhancing weather protection.
- Durable aluminum construction on the rain deflector resists corrosion. Durable composite construction on the rain guard resists deterioration.
- Highly recommended for applications directly exposed to wind and rain.



Genuine Therma-Tru® multi-point locking systems engage the frame at three points from top to bottom, helping to preserve the seal even under wind pressure. Without precision engineering in this critical area, wind can push the top and bottom corners of the door away from the frame, allowing air and moisture to pass through.

- Provides more engagement of locking hardware than traditional deadbolt assemblies.
- Premium stainless steel construction provides excellent corrosion resistance.
- Highly recommended for 8'0" and double fiberglass door systems. (Not recommended for steel door systems.)

Multi-Point Locking Systems (MPLS)



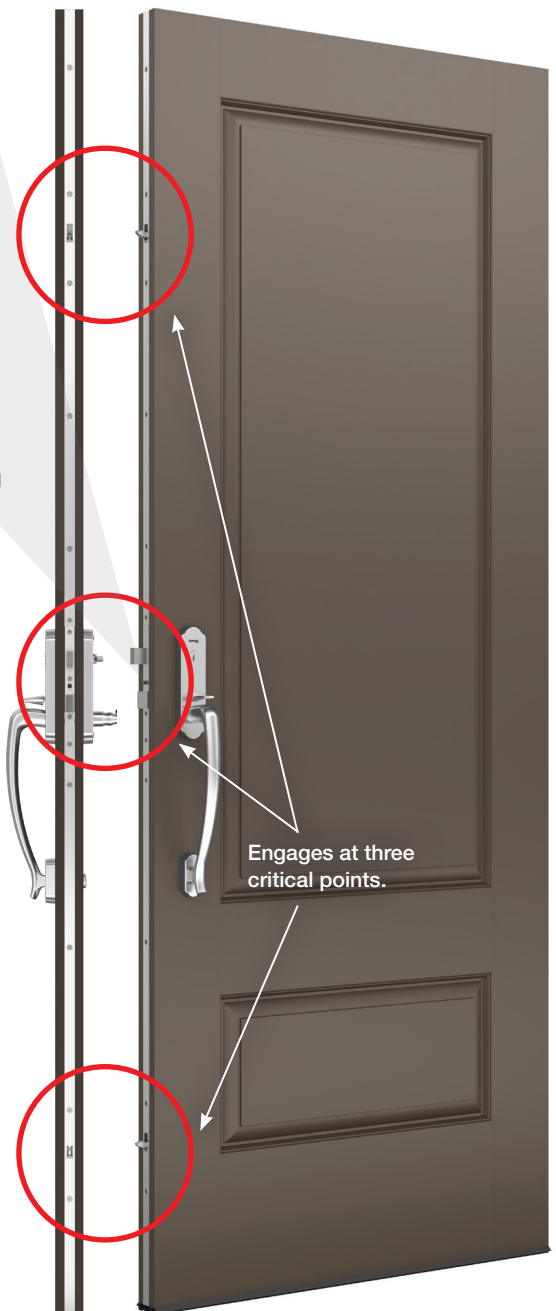
- 1 Self-lubricating locks.
- 2 1" premium stainless steel deadbolt.
- 3 Integrated mishandling device.



Tongue

Heights: 6'6"
6'8"
7'0"
8'0"

Configurations:
Inswing
Outswing



Side view of door.

Exterior view of door.



Grip-Style MPLS +

Grip-style handlesets offer an intuitive approach to the multi-point locking system with on-trend aesthetics. A simple 90-degree twist of the thumbturn (interior) or a key (exterior) is all it takes to engage the door frame at three points with no need to lift the handleset lever. An integrated mishandling device protects the door and frame from accidental damage. Features deadbolt located above handleset. (Active option only. Not available for double door systems with an astragal.)



Exterior view of door.

Side view of door.



- 1 Self-lubricating locks.
- 2 1" premium stainless steel deadbolt.
- 3 Integrated mishandling device.



Tongue

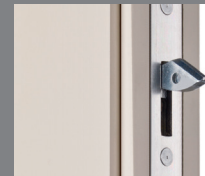
Heights:	Configurations:
6'6"	Inswing
6'8"	Outswing
7'0"	
8'0"	



Shootbolt

(For door systems with an astragal.)

Heights:	Configurations:
6'6"	Inswing
6'8"	Outswing
7'0"	
8'0"	



Tongue
(Included in vented sidelite units.)
Heights:
6'6"
6'8"
8'0"

Lever-Style MPLS +

Lever-style handlesets bring form and function together with decorative styles. A convenient upward turn of the handle is required before all three points will engage. An integrated mishandling device helps protect the door and frame from accidental damage. Features deadbolt below the handleset.

Vented Sidelites MPLS

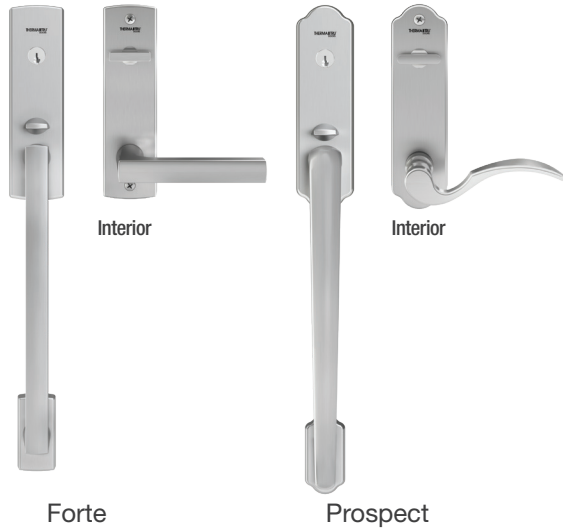
Constructed to provide ventilation without sliding screens blocking the view, vented sidelites work as small swinging doors with convenient removable screens. Engineered for durability and safety with wide patio mullions for strength, and multi-point locking gears and recessed strike plates for security.

Handleset Options for Standard Door MPLS

Designed to complement Therma-Tru door styles from traditional to contemporary.

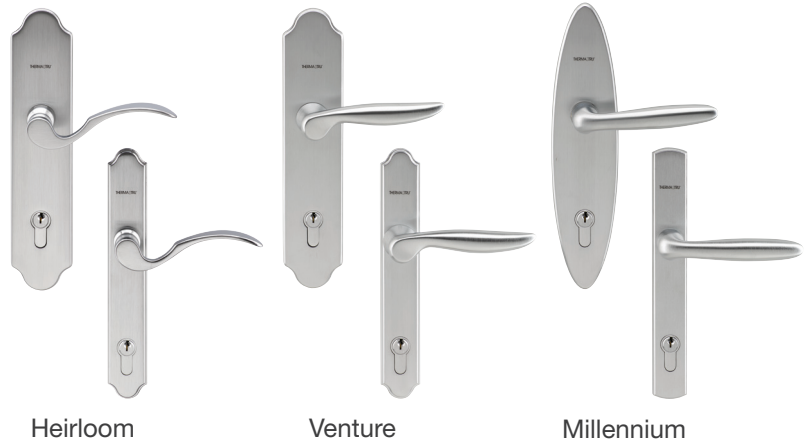
Grip-Style MPLS

Backplates: Wide
Locking: Active

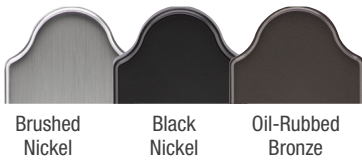


Lever-Style MPLS

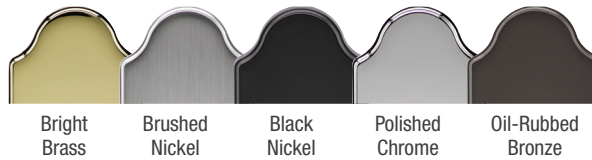
Backplates: Wide, Narrow
Locking: Active, Inactive



Grip-Style Finish Options



Lever-Style Finish Options



Latch & Deadbolt Strike Plate

Adjustable Security Strike Plate

(Recommended for standard lock and deadbolt handlesets only.)

Finish Options:
Brushed Nickel
Black Nickel
Polished Chrome
Oil Rubbed Bronze
Stainless Steel
Zinc Dichomate

A genuine Therma-Tru adjustable security strike plate helps enhance the safety and security of a home, wrapping around the door jamb and fully engaging the frame of the house for added support and strength against forced entry. Our adjustable security strike plates are tested to withstand up to three times the force of standard strike plates.*

- ① Wraps around the door jamb for added support and an exact fit.
- ② 2-1/2" screws fully engage with the frame of the house for added strength.



Standard vs. Adjustable Security Strike Plate

*ASTM-F476. As tested by an independent laboratory. Not available on certain configurations.

**To confirm code requirements in your jurisdiction, always check with your local building authority.

Astragals

Astragal



- Attach to the passive door and lock in place with shootbolts to cover the margin between double doors and help complete the seal against air and moisture infiltration.
- Help provide stability, holding power and lasting durability with aluminum construction that provides more strength than wood.
- Offered with a durable, rot-resistant vinyl wrap in a wood-grained, stainable texture or smooth aluminum to complement the look of the door and home.

- 1 Offered with strike plates to receive a latch and deadbolt or multi-point locking system.
- 2 Integrated weatherstrip helps form a tight seal between the astragal and active door when closed.
- 3 Spring clips to engage and disengage the shootbolts.
- 4 Durable boot engineered to work with the active bottom sweep to complete the seal across the sill.
- 5 16-1/2" locking steel slide bolt can be vertically adjusted for a secure fit with the sill and frame.

Astragal Boot



Seals across sill.

Enhanced sealing power.

Genuine Therma-Tru. astragals help deliver enhanced sealing power. Our compression-fit astragals feature a secure bottom boot designed to fit tightly to the astragal and engineered to work with the active bottom sweep for an enhanced seal across the sill.

Stainable Astragal +



Note: Shown in Oak grain with Redwood stain.

Stainable Shown in Rustic Clay stain.



Oak Grain

Mahogany Grain

Fir Grain

Aluminum Astragal +



Note: Coastal option also available with thicker aluminum construction and a longer shootbolt to provide improved resistance to wind-driven moisture infiltration.**

Aluminum



Bronze

White

Heights:
6'6"
6'8"
7'0"
8'0"

Width:
7/8"

Configurations:
Inswing
Outswing
Multi-Point Lock
Double Bore
Left-Handed
Right-Handed

Weatherstrip:
Bronze

Engineered to work together.

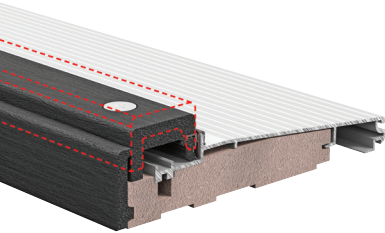
Therma-Tru® door system components are designed to work together with our door families to create a tight seal.

Door Collection	Corner Seal Pad	Weatherstrip	Hinges
<p>Classic-Craft®</p> 	<p>Classic-Craft 7-Shape Pads ✚</p> 	<p>Medium-Reach Weatherstrip ✚</p> <p>For square edge doors. All Sides</p> 	<p>Classic-Craft Ball-Bearing Hinge ✚</p> 
<p>Fiber-Classic® & Smooth-Star®</p> 	<p>Fiber-Classic / Smooth-Star 7-Shape Pads ✚</p> 	<p>Medium-Reach Weatherstrip ✚</p> <p>Hinge Side</p>  <p>Long-Reach Weatherstrip ✚</p> <p>For bull edge doors. Lock & Head Side</p> 	<p>Self-Aligning Ball-Bearing Hinge ✚</p> <p>Tabs for pass through door machining.</p> 
<p>Profiles™ & Traditions Steel</p> 	<p>Basic Fixed Pads ✚</p> 	<p>Medium-Reach Weatherstrip ✚</p> <p>Hinge Side</p>  <p>Long-Reach Weatherstrip ✚</p> <p>For bull edge doors. Lock & Head Side</p> 	<p>Self-Aligning Hinge ✚</p> <p>Tabs for pass through door machining.</p> 

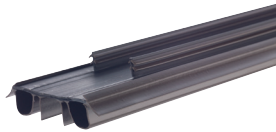
Most common product positioning shown.
 Contact your Therma-Tru seller or see tech manual for details and options.

Sill & Door Bottom

Composite Adjustable Sill ✚

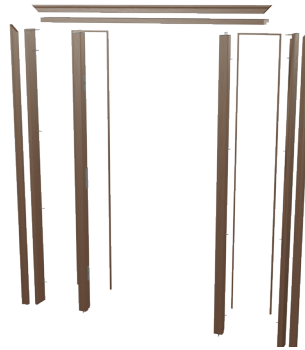


Kerf-Applied Dual-Bulb / Dual-Fin Bottom Sweep ✚



Door Frame

Composite Door Frame



Locking System

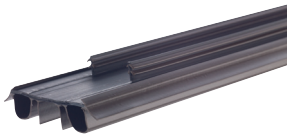
Multi-Point Locking Systems



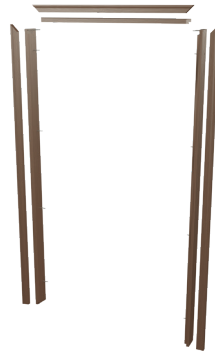
Basic Composite Adjustable Sill



Kerf-Applied Dual-Bulb / Dual-Fin Bottom Sweep ✚



Composite Door Frame



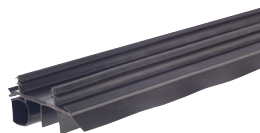
Multi-Point Locking Systems



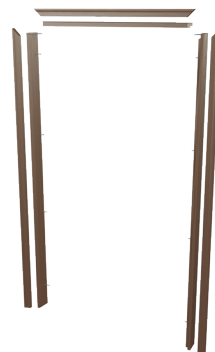
Basic Fixed Sill



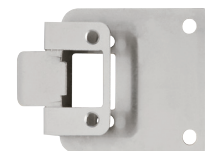
Kerf-Applied Single-Bulb Bottom Sweep



Composite Door Frame



Latch & Deadbolt Strike Plate





Turn to the door system experts.

Visit our online replacement parts configurator and helpful videos to learn how to maintain the integrity of a complete door system with genuine Therma-Tru components – thermatru.com/parts.

THERMA-TRU[®]
DOORS

Where Home Begins™

thermatru.com
1-800-THERMA-TRU (843-7628)
1750 Indian Wood Circle
Maumee, OH 43537



©2020 Therma-Tru Corp. All rights reserved. THERMA-TRU and the Therma-Tru Logo are trademarks of Therma-Tru Corp. Registered trademarks are registered in the U.S. and may be registered internationally. Therma-Tru Corp. is an operating company of Fortune Brands Home & Security, Inc. The Best Buy Seal and other licensed materials are registered certification marks and trademarks of Consumers Digest Communications, LLC, used under license. For award information, visit ConsumersDigest.com. ENERGY STAR is a government program that helps consumers protect the environment through superior energy efficiency and is a registered trademark of the U.S. Department of Energy and the U.S. Environmental Protection Agency.
Part #MAFCOMP20 MTZT / DEC 2019

Engineered to work together.

Therma-Tru Door system components are designed to work together with our door families to create a tight seal.

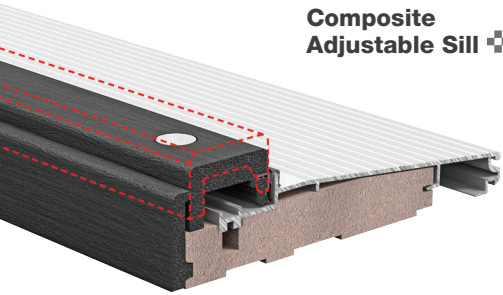
Door Collection	Corner Seal Pad	Weatherstrip	Hinges
<p>Classic-Craft®</p> 	 <p>Classic-Craft 7-Shape Pads ✚</p>	<p>Medium-Reach Weatherstrip ✚ For square edge doors</p>  <p>All Sides</p>	 <p>Classic-Craft Ball-Bearing Hinge ✚</p>
<p>Fiber-Classic® & Smooth-Star®</p> 	 <p>Fiber-Classic / Smooth-Star 7-Shape Pads ✚</p>	<p>Medium-Reach Weatherstrip ✚</p>  <p>Hinge Side</p> <p>Long-Reach Weatherstrip ✚ For bull edge doors</p>  <p>Lock & Head Side</p>	 <p>Self-Aligning Ball-Bearing Hinge ✚ Tabs for pass through door machining</p>
<p>Profiles™ & Traditions Steel</p> 	 <p>Basic Fixed Pads ✚</p>	<p>Medium-Reach Weatherstrip ✚</p>  <p>Hinge Side</p> <p>Long-Reach Weatherstrip ✚</p>  <p>Lock & Head Side</p>	 <p>Self-Aligning Hinge ✚ Tabs for pass through door machining</p>

Sill & Door Bottom

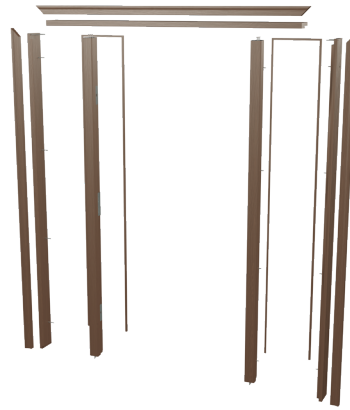
Door Frame

Locking System

Composite Adjustable Sill ✚



Kerf-Applied Dual-Bulb / Dual-Fin Bottom Sweep ✚



Composite Door Frame

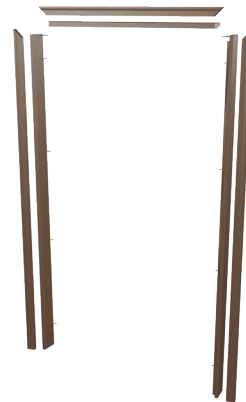
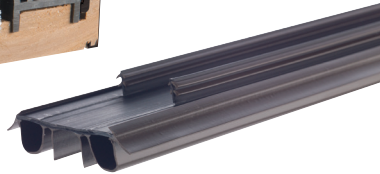


Multi-Point Locking Systems

Basic Composite Adjustable Sill



Kerf-Applied Dual-Bulb / Dual-Fin Bottom Sweep ✚



Composite Door Frame

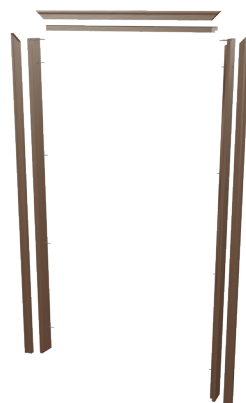
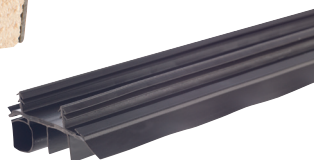


Multi-Point Locking Systems

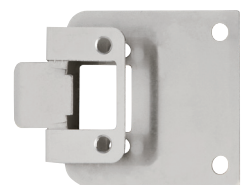
Basic Fixed Sill



Kerf-Applied Single-Bulb Bottom Sweep



Composite Door Frame



Latch & Deadbolt Strike Plate